



# MAGNIFIQUE MEETINGS

SOFITEL  
AUCKLAND VIADUCT HARBOUR





## 91 LUXURIOUS ROOMS & SUITES

---

### ACCOMMODATION

Unwind in your stylish guest room or suite, each featuring floor to ceiling windows, private Juliet balconies, over-sized bathrooms with decadent rain showers and deep soaking bathtubs.

After a busy day, dive into your plush and inviting MyBed™ for a restful night's sleep.

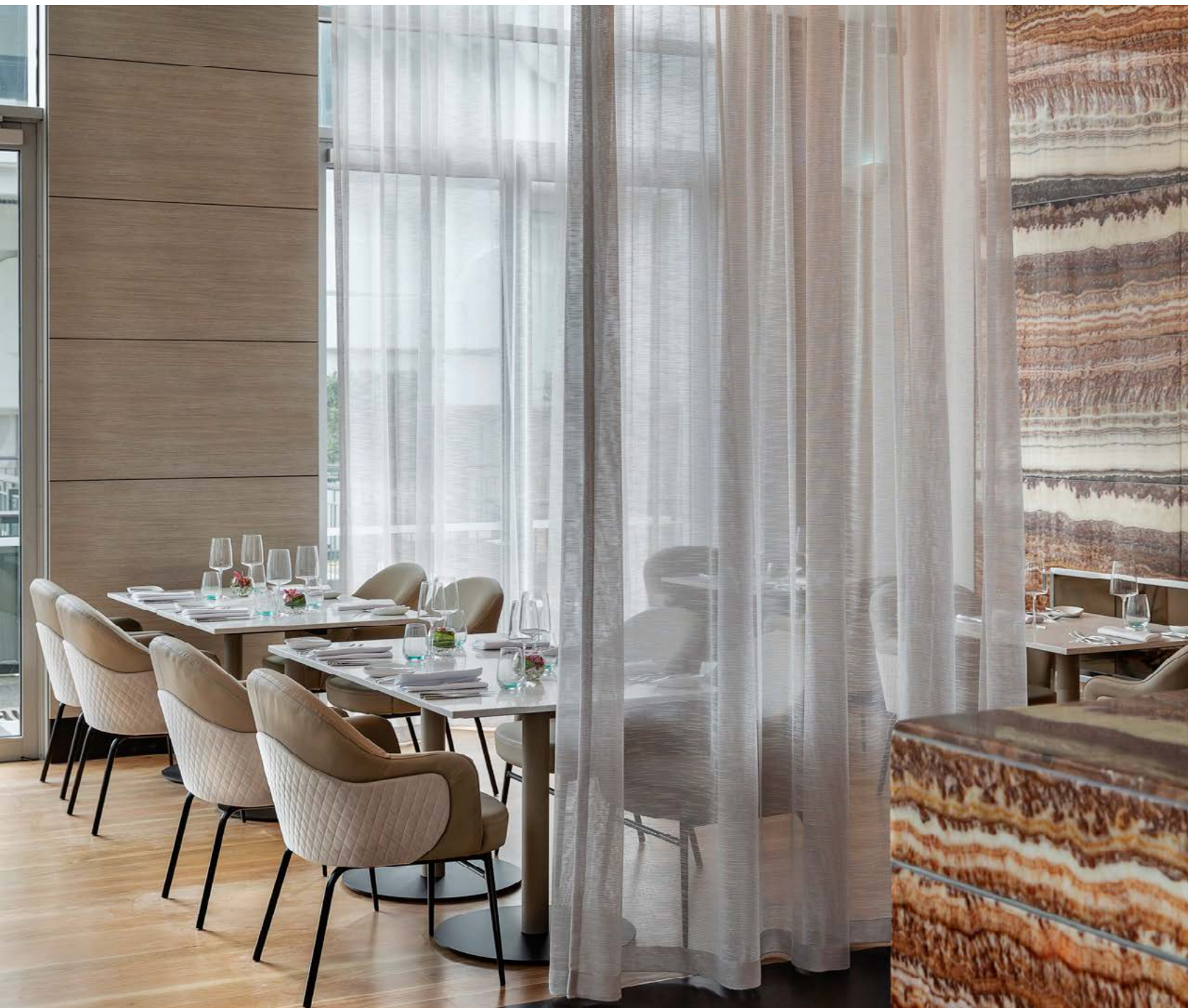
## RESTAURANT, BAR & CAFÉ

---

### LA MARÉE DINING

Underpinned by a respect for technique, quality local ingredients and sustainability, the menu is a balance of textures and flavours with an undercurrent of French chic with a Latin twist.

A quintessential spot to delight yourself looking over the Maritime waters.



### MURMUR & CO.

Hidden in the basement of Sofitel Auckland, Murmur & Co. is a seductive, 1920s-style speakeasy bar for cocktails in an exclusive setting. Perfect for intimate gathering.

Due to be completed in early 2024.

### GRAPE & OLIVE MEDITERRANEAN RESTAURANT

Unforgettable meals happen here. Grape & Olive showcases authentic Mediterranean cuisine and a vast wine list.

Due to be completed in early 2024.



# TRANQUIL SANCTUARY & WELL-BEING

## SOFITEL SPA

Inspired by our harbour locale and tranquil waterfall, Sofitel Spa offers a unique welcome cleansing ritual and mineral water spa.

Curated with tranquility and balance in mind, our humble oasis prioritizes your relaxation.



## SOFITEL FITNESS

Committed to wellbeing, Sofitel Fitness is equipped with the best state-of-the-art **Techno gym equipment**, indoor 20m salt water lap pool, spa pool, a sauna and a steam room.

Surrounded by mosaic art of two star crossed lovers, you are welcomed to a holistic fitness experience imbued with style and a touch of elegance.



Our treatments uniquely infuse l'eau elements into its therapies and rituals, using scientific focus on French cosmology such as the famed icon, **Biologique Recherche**, British skincare, **Elemis** and New Zealand brand, **Nellie Tier**.





---

## SERVICES

Extensive conference facilities  
Audio visuals  
Complimentary Wi-Fi  
Business centre  
Special access facilities  
24-hour reception  
Round the clock in-room dining  
Concierge service  
So Fit gym  
So Spa  
Heated indoor lap pool  
Guest laundry  
Valet service



---

## VENUES

### THE BOULEVARD ROOM

Bathed in natural daylight from floor-to-ceiling windows front and back, The Boulevard Room overlooks the sparkling waters of the marina promenade. The dynamic space can be opened for cocktails or shuttered off the audio-visual presentations.

Our largest function space and offers a grand entry experience with black carpet and can be paired with the Marina Terrace for breaks.

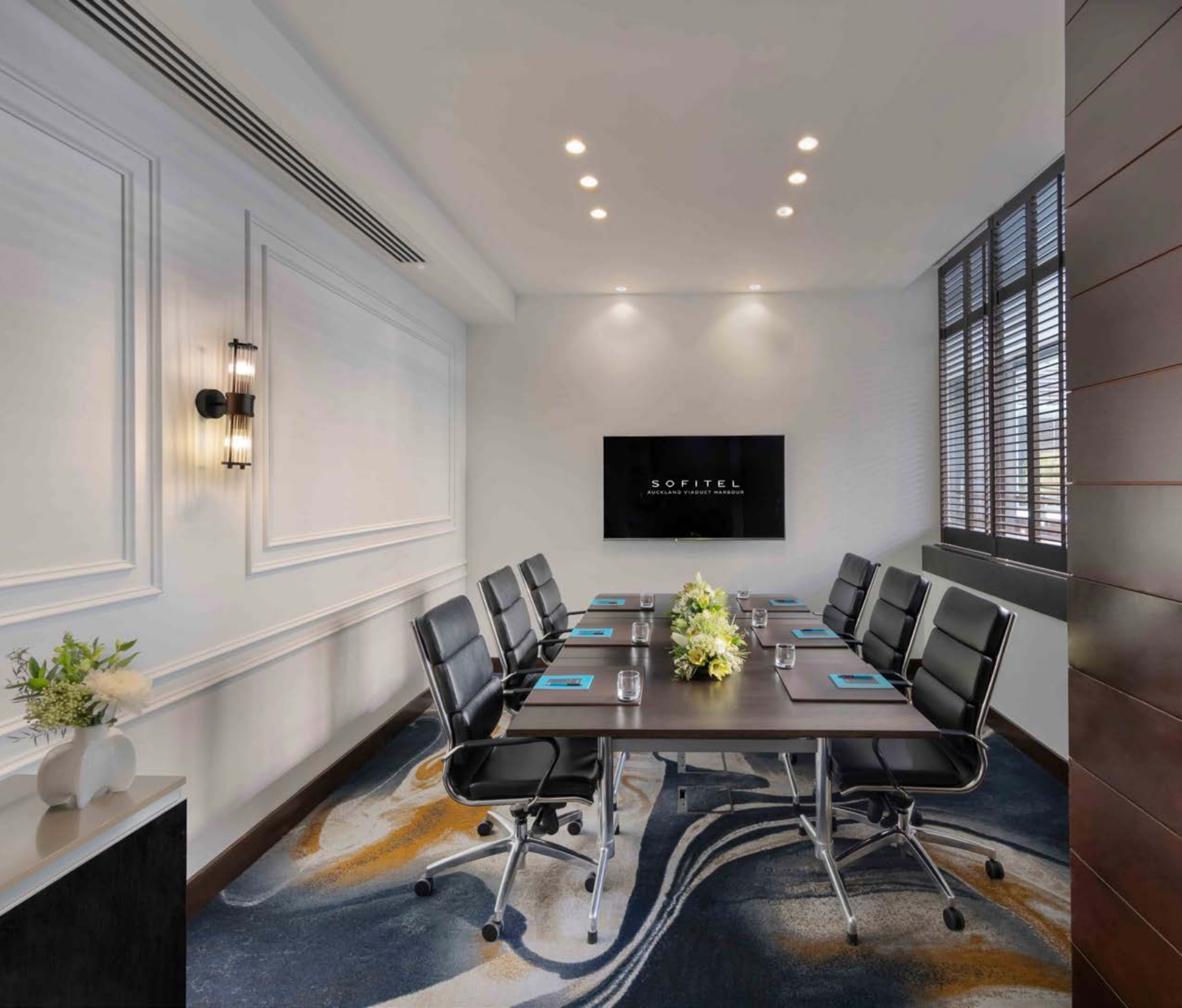
---

## VENUES

### THE RETREAT

The Retreat is a stylish oasis of privacy and tranquility, located on the top floor of the hotel with unparalleled views of the Sky Tower and cityscape. The venue also features private bathroom facilities and a Juliet balcony.

Please note, evening events in The Retreat conclude at 10.30pm. However, we invite guests to adjourn to Sabrage Champagne Bar and continue socialising.



### HALSEY 1 & 2

Take your meeting to the next level with Sofitel and experience leather jotters, fresh flowers, gourmet nuts and bottled French and New Zealand mineral waters.

Make use of Halsey 1 or 2, overlooking the atrium and offering guests the ultimate intimate conferencing experience as natural light streams into the room.

Your team will be fully focussed on success while our event ambassadors deliver seamless service and hospitality.





# CAPACITY

MEETING ROOMS	SURFACE m2	HEIGHT m2	CLASSROOM	THEATRE	U-SHAPE	BOARDROOM	BANQUET	COCKTAIL	CABERET
THE BOULEVARD ROOM	195	3.6	60	130	33	26	100	130	70
THE RETREAT	88	2.5	18	30	15	20	24	35	21
HALSEY ONE	20	3.2	-	-	-	7	-	-	
HALSEY TWO	29	2.4	-	-	-	12	-	-	
THE BOULEVARD ROOM & MARINA TERRACE	289	-	-	-	-	-	-	230	





## CONFERENCE PACKAGES

---

### FULL DAY DELEGATE PACKAGE \$109.00pp

- Venue hire
- Arrival tea and coffee
- Morning tea
- Magnifique working lunch
- Sparkling and still water
- Notepads and pens
- 1GB Wi-Fi
- Dried fruit and nuts, table mints

---

### HALF DAY DELEGATE PACKAGE \$89.00pp

- Venue hire
- Arrival tea and coffee
- A selection of either a morning tea or afternoon tea
- Magnifique working lunch
- Sparkling and still water
- Notepads and pens
- 1GB Wi-Fi
- Dried fruit and nuts, table mints



## BREAKFAST & REFRESHMENT BREAK

---

### BREAKFAST

Continental breakfast from \$45.00  
Plated breakfast from \$55.00  
Buffet breakfast from \$55.00  
Sofitel networking breakfast from \$55.00

### BREAKS

Morning tea or afternoon tea include:  
French pressed coffee  
A selection of premium teas  
Two food items from the menu

Add a selection of chilled juices \$2.00 per person  
Additional food items \$3.50 per person, per item

To add refreshment breaks separately:  
Arrival tea and coffee from \$7.00 per person  
Morning or afternoon tea \$20.00 per person with two food options  
Add selection of fresh juices for an additional \$4.00 per person  
Additional food items are available for \$5.00 per person, per item



## LUNCH & DINNER

---

### WORKING LUNCH

**\$55.00 Light Lunch:** Choose two items from the salad and sweet menus  
**\$65.00 Working Lunch:** Choose two items from the salad, hot and sweet menus + two sides

### SET LUNCH & DINNER

2 courses from \$105.00 per person  
3 courses from \$120.00 per person



## CANAPÉS

Minimum 20 of each item  
Minimum 20 guests

---

### SELECTION OF 6 CANAPÉS

\$30.00 per person

### SELECTION OF 8 CANAPÉS

\$40.00 per person

## PLATTERS

From \$260.00



## BEVERAGE PACKAGE

---

### GOLD PACKAGE

**1 hour \$42.00 | 2 hour \$54.00 | 3 hour \$66.00 | 4 hour \$72.00**

A selection of New Zealand wines including Sauvignon Blanc, Pinot Gris, Chardonnay, Rose and Pinot Noir. Selection of local beers, soft drinks, juices and bottled water are included.

#### **BEER**

- Steinlager Range (Pure/Pure Light)
- Corona Extra

#### **WINES**

- Le Contesse Prosecco DOC
- The Grayling Sauvignon Blanc/ Pinot Gris / Chardonnay / Pinot Noir
- The Ned Rose

Tailor-made beverages packages are available on request. Should you wish to choose different varieties of wines, please let us know. Prices are GST inclusive, and are for a minimum of 20 people.



## BEVERAGE PACKAGE

---

### ELITE PACKAGE

**1 hour \$54.00 | 2 hour \$66.00 | 3 hour \$76.00 | 4 hour \$84.00**

A selection of premium New Zealand wines including Sauvignon Blanc, Pinot Gris, Chardonnay, Rose and Cabernet Merlot. A selection of sparkling wines, local and international beers, soft drinks, juices and bottled water are included.

#### BEER

- Steinlager Range (Pure/Pure Light)
- Panhead Range (APA/XPA/Pilsner)
- Corona Extra

#### WINES

- Cloudy Bay Pelorus Sparkling
- Brancott Sauvignon Blanc
- Maude Pinot Gris
- Macon Villages Cave de Lugny Chardonnay
- AIX Rose
- Brancott Pinot Noir
- Delas Cotes du Rhone Saint-Esprit Syrah
- Chateau Charbonneau Sequoia Cabernet Franc Merlot

\*Additional \$10 to upgrade to GH Mumm Brut

Tailor-made beverage packages are available on request. Should you wish to choose different varieties of wines, please us know. Prices are GST inclusive, and are for a minimum of 20 people.



## AUDIO VISUAL

---

Sofitel Auckland's production is managed in-house by Encore Event Technologies, offering the highest quality AV services with state-of-the-art equipment.

The team works together with Sofitel Auckland's Conference and Events department to ensure a flawless 5-star experience.



## SOFITEI AUCKLAND VIADUCT HARBOUR

21 Viaduct Harbour Avenue

Tel: +64 9 354 7455 | Email: [h8577-sb4@sofitel.com](mailto:h8577-sb4@sofitel.com) | [www.sofitel-auckland.com](http://www.sofitel-auckland.com)

[VIRTUAL TOUR](#)

[ACCOMMODATION](#)

[AWARDS](#)